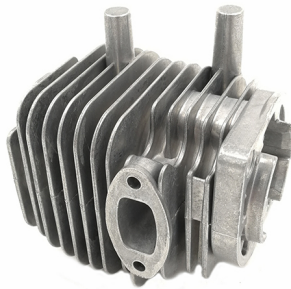


Motorcycle Engine Parts

You can rest assured to buy Motorcycle Engine Parts from our factory and we will offer you the best after-sale service and timely delivery.



Motorcycle Engine Parts Introduction

Yinzhou Ruican® is direct manufacturer, covers the sand casting Foundry, Investment Casting Foundry and Machining Workshop, and offer the Ductile Iron Grey Iron Sand casting parts, investment casting parts, Aluminium casting and precision machining parts.

The produced parts are widely used in Auto parts: Agricultural, Marine; Architectural, Machinery,

Medical; Food Machinery, Valves and so on. The material which we used Aluminium; Bronze; Brass; Copper; carbon steel; stainless steel and so on.

At the same time, we can offer the CNC machining; Phosphating; Blackening Processing; Hot Dip Galvanizing; Powder Coating; Painting; Plating, Assembly for customers.

85% products are sold to overseas, the customers are from America, Canada, Europe Union, ect. 15% products are sold in National Market.

Quick Details

Brand Name:	OEM	Model Number:	OEM
Tolerance:	±0.05mm	Process:	casting, die casting
Surface treatment:	Customized (polishing, shot blasting, painting, powder coating)	Certificate:	ISO 9001-2008
Applied software:	Pro/E, AutoCAD, SolidWorks, CAE	Mold making:	by ourselves (30 sets/month)

Ningbo City Yinzhou Ruican Machinery Co., Ltd.

Tel: +86-574-88067759

E-mail: salesa@cnsandcasting.com

	XA, UG, CAD/CAM/CAE		
Mold life:	50,000 die	Product range:	motorcycle,light,Industrial,furniture,door,window parts
Target market:	all the world		

Supply Ability

Supply Ability	100 Piece/Pieces per Month
----------------	----------------------------

Packaging & Delivery

Packaging Details	customized(Carton,wooden cases.pallet,etc)
Port	Ningbo, Shanghai